

Missouri LICA NEWS

Volume 65 Number 2

The Missouri Land Improvement Contractors Association

January/February 2006



Calling All Cost-Share Contractors!

*If You Do Any State Cost-Share Work ...
Read This!*

In This Issue:

Cost-Share Program	1
Welcome to LICA	2
Directory Changes	2
Happy Birthday	2
Soil & Parks Sales Tax Fact Sheet	3
2006 LICA Officers	4
2006 Auxiliary Officers	4
Auxiliary President Letter	4
LICA Chairman Letter	4
Membership Awards	5
Winter Convention Sponsors	6
List of Approved Eligible Cost-Share Practices	7
2006 Convention Moments	8
On the Web	9
Future LICA Members	9
Top Ten Ways to Avoid NPDES Phase II Fines	9
2006 MLICA Drainage Workshop	11

If you perform work that is funded by the state cost-share program (1/10th cent Soil, Water and State Parks Sales Tax) and want to continue to do so, you must get involved NOW!

In either August or November, Missouri voters will be asked to vote on Constitutional Amendment 1. This Amendment will renew the state cost-share program until the year 2016. And, when the tax comes up for renewal the next time, the issue would be placed on the ballot automatically, rather than requiring testimony before a variety of legislative committees and/or having to conduct an initiative petition drive.

Since the Citizens Committee for Soil, Water and State Parks was able to convince the 2005 Legislature to put Constitutional Amendment 1 on the ballot this year, we did not have to conduct an initiative petition drive. This obviously saved us lots of time, but it also meant we were not able to spread the word about the great things this tax has done for the State of Missouri.

Here's what you need to do if you want the state cost-share program to renew:

1. Contact the Governor's Office (573-751-3222)

Ask him to place Constitutional Amendment 1 on the August 8 ballot. The November, 2006 ballot is expected to include many controversial issues. Constitutional Amendment 1 (State Cost-Share) could easily get lost in the crowd - allowing the blanket "no" voters to defeat it.

2. Help Fund the Campaign

Farmers, employees of the Soil and Water Districts, local citizens, and employees of the Department of Natural Resources have all dug into their own pockets to help fund an informational campaign. It's time for the contractors to do the same.

The Citizens Committee has established a budget to get the success stories out to the voters. They need to get these funds in advance in order to be able to reserve ad space, print flyers, etc.

Make your check payable to:

Citizens Committee for Soil, Water
and State Parks
P.O. Box 658
Jefferson City, MO 65102

3. Spread the Word

On page 3 of this newsletter, you will find a Soil & State Parks Fact Sheet. You can see the great successes which have been accomplished by this sales tax, along with the need for its continuance.

Please take this Fact Sheet and share it with as many voters as you can. We not only need money to get the word out ... we need you!

In a nutshell ...

If you want the state cost-share program to continue, you must get involved NOW. Contact the Governor, send in a check, and spread the word. Too busy right now? Just think about your business and all the time you'll have if this issue doesn't pass.

Missouri LICA NEWS



Missouri Land Improvement Contractors Association

The *Missouri LICA NEWS* is the official bi-monthly publication of the Missouri Land Improvement Contractors Association, dedicated to the professional conservation of soil and water.

The *Missouri LICA NEWS* welcomes your comments and articles.

1101 West High Street
Jefferson City, MO 65109
Phone: 573-634-3001
Fax: 573-761-0375
Email: info@MLICA.org

Visit our website
www.MLICA.org

STATE OFFICERS

Chairman Eddie Gilmore
Auxvasse, MO

President Milburn Davis
Cole Camp, MO

Vice President Larry LaFollette
Strafford, MO

Secretary/Treasurer Jim Bledsoe
Savannah, MO

District #1
President Dennis Brinton
Gower, MO

District #2
President Nelson Wilson
Mexico, MO

District #3
President Melvin Beckemeyer
Wellington, MO

District #4
President Dean Yoder
Warsaw, MO

District #5
President Ken Balkenbusch
Linn, MO

District #6 Vacant

Welcome to LICA!

We'd like to welcome the following member to Missouri LICA.

NEW CONTRACTORS

Ralph Bailey; Jo Ann
Bailey Dozing, Inc.
9916 Highway 131
Odessa, MO 64076-7373
District: 3 County: Lafayette
Phone: 816-633-7262
Cell: 816-661-1780
Work Categories:
EC,EMC,EXG,LL,ODW,
PD,SEP,SWU,TW
Equipment: BH,DP,DZ,SC,TR

Barney Esbeck; Robin
Gallatin Sand & Construction
P.O. Box 2
Gallatin, MO 64640-0002
District: 1 County: Daviess
Phone: 660-663-2264
Fax: 660-663-4218
Cell: 660-605-0839
Email: esbeck@grundyec.net
Work Categories: EC,EMC,EXG,GR,LL,
LS,PD,R,SP,TW
Equipment: LD,DZ

Tom Craig; Maleia
Craig's Excavating, LLC
15648 Little Lake Road
Cole Camp, MO 65325-2372
District: 4 County: Benton
Phone: 660-668-3629
Cell: 660-287-1861 or 660-281-1477
Sponsor: Dean Yoder

David Wiggins; RaElla
David Wiggins Farm's
RR 3 Box 247
Memphis, MO 63555-9215
District:2 County: Scotland
Phone: 660-883-5814
Fax: 660-883-5814
Cell: 660-341-1257
Email: dwiggins@nemr.net
Work Categories: EC,EMC,PD,TW,WM
Equipment: DZ,ME,TR
Sponsor: Bruce Tague

NEW SUPPORTING MEMBER

Andy Earhart; Kristy
17998 Buckholtz Rd.
Farmington, MO 63640-7186
District: 6 County: St. Francois
Phone: 573-756-8546
Cell: 573-701-5977
Sponsor: Elsie Shelley

Directory Changes

Pat Turpin, Turpin Excavation has a new address, email and county.

Pat Turpin
Turpin Excavation
PO Box 185
Eldon, MO 65026-0185
Email: trupinex@sbcglobal.net;
County: Miller

Dysart Insurance Agency, Inc. has a new MLICA contact :

Dysart Insurance Agency, Inc.
Phillip Giffen;
P.O. Box 621
Marshall, MO 65340-0621
Office Phone: 660-886-6502
Home Phone 660-674-2222
Fax: 816-886-9013

Hancor, Inc. has a new MLICA contact:

Dave Sleep;
Hancor, Inc.
15810 Rolling Ridge Rd.
Omaha, NE 68135-1115
Phone: 402-894-1554
Fax: 402-894-1608
Cell: 402-630-0126
Email: dsleep@hancor.com
Website: www.hancor.com



January

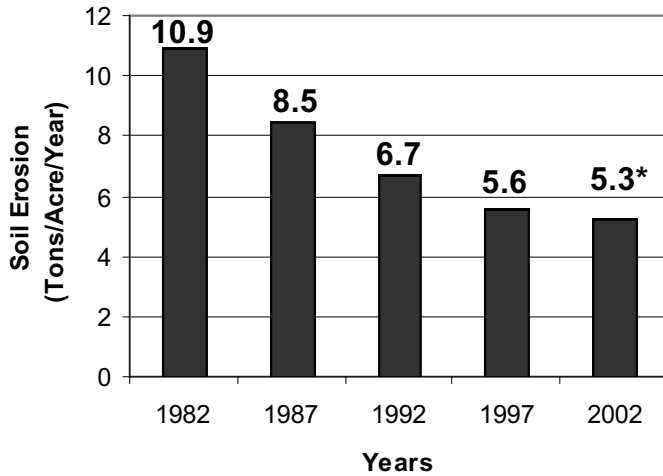
05 Jay Thoroughman
10 Pat Turpin
12 Larry Walters
15 Philip Kirkpatrick
19 Phil Wilson
25 Grant Matthews
29 Jeff Schnieders

February

01 Gerald Wyatt
10 Greg Fuller
John Houston
12 Ken Kauffman
13 Kristi Lillig
Matt Walter
15 Nelson Wilson
16 Darren Woods
17 Lester Rufenacht
18 Laura Thompson
21 Jim Bledsoe
26 Bruce Tague

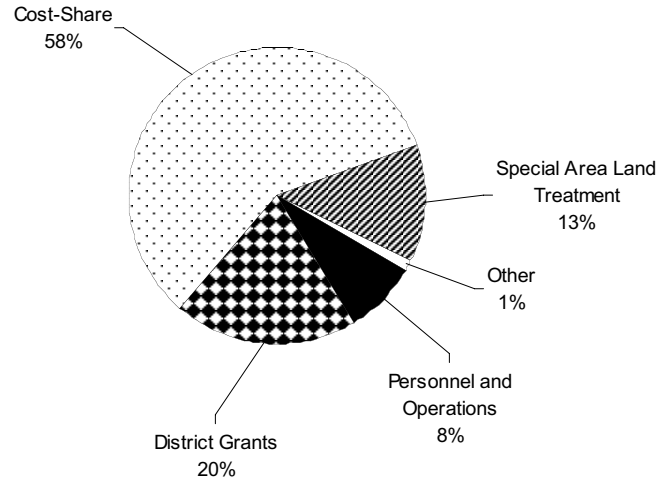
Soils and Parks Sales Tax Fact Sheet

Missouri Soil Erosion on Cultivated Cropland



- Funds are divided equally between soil and water conservation and the state park system.
- The sales tax is the sole source of funding for the Soil and Water Conservation Program. It does not receive any general revenue. If the tax is not renewed, the department would have to secure another funding source to continue its work conserving Missouri's soil and water for future generations.
- Erosion rates in Missouri have decreased by half, more than any other state, since the sales tax was first passed in 1982.
- It is estimated that our programs have helped save more than 148 million tons of soil.
- There are 3.7 million acres* eroding above tolerable levels in Missouri according to pre-release 2003 National Resources Inventory estimates. In 1982, 9.3 million acres were eroding above "T" and in 1997, there were 5 million acres eroding above "T".
- As of 2004, the department's Soil and Water Conservation Program had reimbursed approximately \$372 million to 161,000 landowners since the start of the sales tax.
- Eleven AgNPS SALT projects have been successfully completed, and 68 projects are currently working toward their goals of improving their watershed.
- The Soil and Water Districts Commission will continue to focus on soil and water conservation in the future. They will accomplish this by:
 - maintaining and increasing conservation projects, including projects that focus on water quality on a watershed basis;
 - assisting soil and water conservation districts;
 - working with partners to determine and implement long-term stewardship plans;
 - providing information and educational opportunities;
 - identifying and understanding land use changes; and
 - remaining accountable to the public.

Soil and Water Conservation Program Average Expenditures Fiscal Year 1998 to 2004



Descriptions of Programs

- Cost-Share Program:** This program provides incentives for landowners to install practices that prevent or control excessive erosion, such as terraces and water impoundment reservoirs. Landowners can request up to 75 percent of the cost of the practice to be reimbursed, after the practice has gone through a certification process.
- Agricultural Nonpoint Source Special Area Land Treatment Program (AgNPS SALT):** These five- to seven-year projects focus on decreasing agricultural nonpoint source pollution in watersheds. AgNPS SALT uses total resource management to decrease sediments, pesticides and nutrients entering waterways. More than 70 watershed projects have received funding and assistance since the program's creation, and seven projects have been completed.
- District Grants:** Each of the 114 soil and water conservation districts in Missouri receives a district grant. These grants can be used to hire personnel, fund technical assistance, and provide information and education programs.
- Loan Interest-Share Program:** This program reimburses a portion of interest on landowners' loans when they purchase equipment or administer management practices that reduce erosion or the potential for erosion.
- Soil Science:** The soil science section provides a scientific foundation for conservation by continually updating the Soil Survey, which is available to the public at no charge (<http://soils.missouri.edu>), and providing technical soils assistance to landowners.
- The Department's Soil and Water Conservation Program also provides money for university research, district benefits and administrative costs. The program receives no general revenue funding for soil and water conservation efforts.

*Signifies pre-release estimates based upon the 2003 National Resources Inventory. These estimates are subject to change.

2006 LICA & Auxiliary Officers



↑ Back row, from left: Milburn Davis, Larry LaFollette, and Jim Bledsoe; Seated, from left: Virginia Beckemeyer, Sally Bauer, Pat Houston, Lisa Davis



Thank You Ladies

We just arrived home after another great MLICA Winter Convention. What a great feeling when events we planned came off with just a hitch or two. Our membership is great about going with the flow.

Year to year, I look forward to visiting with the ladies of our Auxiliary and I'm sad when a death, sickness, or whatever keeps them from our meetings. We have 51 members, nine of whom have been members for 30 years. I think that says a lot for our organization.

Once again, a great big "Thanks!" to the ladies that have so graciously worked on committees the past four years. I appreciate the willingness of each and everyone to accept the challenge of a committee.

I am excited about the coming year! I think we have a great group of Auxiliary officers and that the coming year will be one to remember!

Ginger Matthews

Auxiliary Past President

LICA 2006-2008 Officers

President: Milburn Davis; Cole Camp, MO
Vice President: Larry LaFollette; Strafford, MO
Secretary/Treasurer: Jim Bledsoe; Savannah, MO

Auxiliary 2006-2008 Officers

President: Virginia Beckemeyer; Wellington, MO
Vice President: Sally Bauer; Rockville, MO
Secretary: Pat Houston; Higginsville, MO
Treasurer: Lisa Davis; Cole Camp, MO

Some Thanks from Eddie

I hope everyone returned home safely from our Convention. I thought last year's convention was great, but I think this year passed it up. I was glad to see everyone again and also surprised to see so many new faces. And thanks to the members who encouraged them to come.

I appreciate those of you who take on the workload, year after year and those of you who show up at every convention. I know it's costly and takes time away from home, but if we don't do it ourselves, nobody will do it for us. I especially want to thank our "Debbies" for all their work and expertise. Especially all the countless hours on the dioramas. They look very professional.

I also want to thank those of you who are responsible for our education classes. You did an excellent job, as they were very informative and interesting.

I also want to thank those of you who give the prayers for our meals. I know we pick on the same ones every year, but for some reason there are only a few blessed with that talent.

I'm not going to forget the Ladies Auxiliary. I'm ashamed that I don't know all the great things you do for us with your special skills. Sometimes you ladies don't get enough recognition but I thank you very much for all your efforts, the special touch that rounds out our organization.

Next, our Associates. Thank You - Thank You - Thank You. Without each and every one of you, it would be tougher for us to exist.

I also would like to thank Roger Hansen, Dick Purcell, and Sarah Fast for spending their time with us, especially on their day off. Sharing info with us, so we can better serve our customers.

I want to thank all the membership for allowing me the opportunity to serve as your President. I hope I made some difference and will continue to serve in the future. I do believe we're in good hands with Milburn Davis, for in my judgement he is an honest and hard-working man that will lead us in the right direction. Thanks to Milburn for the kind words at the banquet and to Debbie for writing them for him!

Keep your powder dry.

Eddie Gilmore

P.S. I'm still ticked off at Milburn over that paycheck!

A Few Very Special Members

In 2005, the Awards Committee decided it was high time we began recognizing members for their years of loyalty. In 2006, we realized we'd omitted a very important part of our success ... Our Auxiliary!

So, this year, at our Winter Convention, we had the privilege of presenting some very special members with a plaque or certificate in appreciation for their many years of loyal dedication to LICA.



↑ From left: Ginger Matthew (25 years), Vera Tague (30 years), Virginia Beckemeyer (30 years), Mona Tague (25 years), Sally Bauer (30 years), Judy Wilson (30 years)



↑ From left: Helen Kleinsorge (20 years), Pat Houston (20 years), and Kenna Levings (25 years)



↑ From left: Janet Parks (10 years), Caelene Lance (5 years), Charlene Gilmore (5 years), Stephanie Matthews (5 years), Sondra Brinton (10 years)



↑ Back row, from left: Milburn Davis (5 years), Larry LaFollette (20 years), Dennis Brinton (20 years); Melvin Beckemeyer (30 years); Seated: Weldon Tague (25 years)

Your Link to the World

www.MLICA.org



Winter-Dent & Company

101 E. McCarty St. 1205 W. Broadway, Ste. A
Jefferson City, MO 65101 Columbia, MO 65203
573 / 634-2122 573 / 449-8100

Call Us About ...

The LICA Safety Insurance Program

Insurance ■ Bonds

Employee Benefits ■ Financial Services

An Independent Agent since 1912



Our Sincerest Thanks!

The following Associate members were instrumental in making our 2006 Winter Convention such a success. We'd like to thank them for their continued support!

A.S.P. Enterprises
 Advanced Drainage Systems, Inc.
 Agri Drain Corp.
 Allied Oil & Supplies, Inc.
 Continental Western Group
 Cooke Sales & Service
 Dysart Insurance Agency, Inc.
 Fabick CAT
 G.M. Peters Agency, Inc.
 G.W. Van Keppel Company

Hancor, Inc.
 MFA Oil Company
 Missouri Auto Auction
 Missouri One Call System, Inc.
 Murphy Tractor & Equipment
 Port Industries, Inc.
 Prins Insurance, Inc.
 Prinsco, Inc.
 RoadBuilders Machinery, Inc.
 Roland Machinery
 Scheib Drainage Products
 Springfield Plastics, Inc.
 St. Joseph Tractor, Inc.
 Summit Heavy Equipment, Inc.
 SunSource
 Sydenstricker Implement Company
 Timewell Tile



A.S.P. ENTERPRISES, INC.
Your GeoSource Distributor

Corporate Office:

275 Northwest Blvd.
 Fenton, MO 63026
636.343.4357
 636.343.4732-Fax
 800.869-9600

Regional Offices:

109 N.W. Victoria Drive
 Lee's Summit, MO 64086
816.554.1191
 816.554-2262-Fax
 800.519.2304

9840 S. 140th Street, Suite 5 & 6
 Omaha, NE 68138
402.861.8579
 402.861.8592-Fax
 877.678.8027

PRODUCT LISTING:

Geotextiles

Mirafi Fabrics

Woven
 Non-woven
 Landscape Fabrics

Geogrids

Base Stabilization
 Retaining Walls
 Steepened Slopes

Erosion Control

Silt Fence

North American Green

Erosion Control Blankets
 Turf Reinforcement Mats

Terra Aqua Gabions

Precast Concrete Revetment Mats

Geoweb Confinement System

Sod Staples

Drainage

PVC Pipe 4" to 48"
 HDPE Pipe 4" to 48"

NDS Plastic Catch Basins

Miradrain Wall Drains

Miscellaneous

Pond Liners - PVC, HDPE, LDPE
 Landfill Covers

Geoblock Porous Grass Paving System



TC Mirafi



List of Approved Eligible Cost-Share Practices

At our Winter Convention, one of our members asked Sarah Fast, Director for the Missouri DNR Soil and Water Program, to provide a listing of approved practices, both by number and name. Below is a list of practices approved by the Commission for state cost-share assistance.

- DSL-1 Permanent Vegetative Cover Establishment
- DSL-2 Permanent Vegetative Cover Improvement
- DSL-4 Terrace Systems
- DSL-5 Diversions
- DSL-8 Cropland Protective Cover
- DSL-11 Permanent Vegetative Cover - Critical Areas
- DSL-15 No-Till Systems
- DFR-4 Forest Plantation
- DFR-5 Woodland Protection through Livestock Exclusion
- DWC-1 Water Impoundment Reservoirs
- DWP-1 Sediment Retention, Erosion, or Water Control Structure
- DWP-3 Sod Waterways
- DSP Special Conservation Practices
- DSP-2 Permanent Vegetative Cover Enhancement - Guidelines
- DSP-3 Planned Grazing System
- DSP-31 Sinkhole Improvement to Control Gully Erosion (For eligible districts only)

Special Note:

For state cost-share assistance, the DSL-1, DSL-2, DSL-8, and DSL-15 must have soil loss in excess of "T" to be eligible. The DSL-4, DSL-5, and DSL-11 must either have soil loss in excess of "T" or have active gully erosion.

The DWC-1, DWP-1, DWP-3 and DSP-31 must have active gully erosion.

The DFR-4 and DFR-5, in riparian areas and on upland soils with slopes exceeding 10%, are exempted from soil loss requirements. DFR-4 and DFR-5 practices in all other areas must have either soil loss in excess of "T" or active gully erosion.

The DSP-2 and DSP-3 are exempted from soil loss requirements.

For cost-share purposes, active gully erosion includes both cropland ephemeral gully erosion and classic gully erosion. As the technical agency, NRCS will determine which practices should be used to address cropland ephemeral gully erosion problems, and which practices should be used to address classic gully erosion problems.

LICA Endorsed Insurance Program

A Safety Group Dividend Insurance Program



Administered by



1-800 831-8545 PO Box 220
Contact Bruce Mosier Sanborn, IA 51248
www.prinsins.com

Underwritten by

**Continental Western
Insurance Company**



Some Great Convention Moments



Left: Helen and Mel Kleinsorge display their first place prize for the Picture Match game.

Below: A few of the guys patiently await the arrival of a great steak dinner at the Awards Banquet.



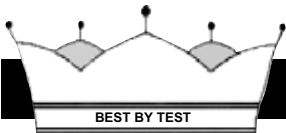
↑ *MLICA President Milburn Davis, left, presents the Past President's plaque to Eddie Gilmore, MLICA Chairman of the Board, in recognition for his fine leadership.*



↑ *Chairman Eddie Gilmore congratulates Karyl Stoehr, Dysart Insurance, who was recognized for her 31 years of commitment to the goals and membership of MLICA.*



↑ *Bruce Mosier, left, and Paul Anema (right) with Prins Insurance keep track of Milburn Davis' progress on the safety competition.*



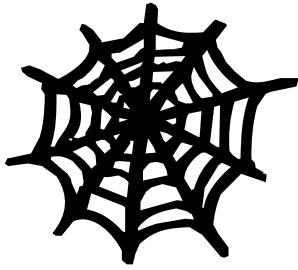
King Oil Company

12314 Huyett Lane ■ Hagerstown, MD 21740
Phone: 800-552-7432 ■ Fax: 301-797-1963

King High Performance Lubricants Are Proven to Reduce Maintenance Costs

- Power King Skid Loader Oil NT reduces hydrostatic system maintenance costs by \$ thousands per year
- Hydra Cat 10W NT resists damaging moisture in Cat™ hydrostatics better than TO-4™ Fluids
- Ask about King Super Solvent 32 AW, gets rid of damaging sludge in all oil compartments
- Magnum Moly EP 2 Grease is **5% Moly!** The best available for construction.
- Magnum Moly Big Plus 15W40 NT is **14+ TBN** for maximum engine protection, long oil life
- We manufacture over 400 Petroleum and Synthetic Oils
- Our **used oil analysis program** is the most complete in the industry and includes free phone consultation about your reports
- Established in 1981 - High Quality and Reasonable Prices

*Our 12 Missouri distributors want to serve you.
Call us for the name of one near you!*



On The Web

To find a Technical Service Provider (TSP) or update your TSP profile:

<http://techreg.usda.gov>

For topographic maps:

<http://www.cares.missouri.edu>

For the USDA soil survey:

<http://soils.usda.gov/survey>



Future LICA Members?

Rod and Lori Schottel became the proud grandparents of Mason Ray, born November 12, 2005. Baby, mom, and grandparents are all doing well!

Eric and Mandy Levings, G.M. Peters Agency, became the proud parents of Ava Lynn Levings on December 1, 2005. We're sure her sister, Allie, grandparents, Kenna and Roger, along with her great-grandparents, Clint and Elnor, are also beaming!

Top Ten Ways to Avoid National Pollutant Discharge Elimination System (NPDES) Phase II Fines

The International Erosion Control Association (IECA) has released a list of the top ten ways to avoid National Pollutant Discharge Elimination System (NPDES) Phase II fines. The NPDES permit program controls waste pollution by regulation point sources that discharge pollutants into waters of the United States. Contractors can be fined if they do not comply with NPDES regulations.

According to IECA, the top ten ways to avoid NPDES Phase II fines are:

1. Submit a Notice of Intent before starting work.
2. Obtain an NPDES permit before starting work.
3. Prepare a Storm Water Pollution Prevention Plan (SWPPP) before starting work.

4. Keep a signed copy of your SWPPP onsite and update it regularly.
5. Implement all parts of your SWPPP throughout the project.
6. Properly train all involved contractors.
7. Correctly install and maintain Best Management Practices.
8. Perform timely inspections and correct problems within 48 hours.
9. Maintain complete records of all SWPPP activities.
10. Never discharge muddy water or other pollutants from the site.

[Source: Montana LICA; January, 2006]

Torque - Durable - Superior - Power Steel - Heavy Duty - Rugged Tough Words - Tough Equipment



The Victor L. Phillips Co. **VLP**



Kansas City—(800) 878-9290
Garden City—(800) 511-1435
Topeka—(800) 878-4345

Joplin—(800) 878-8223
Springfield—(800) 955-2729
Wichita—(800) 878-3346



> Go beyond the limits of other dozers.

All dozers move the earth. But if you want one that does more with a lot less effort, you'll choose a John Deere J-Series. State-of-the-art electronic controls put you in complete command of a whole arsenal of hydrostatic advantages, including power turns, counter-rotation, and infinitely variable travel speeds. What's more, Total Machine Control (TMC) lets an operator customize decelerator mode and response, forward/reverse ground speed ranges, steering modulation, and forward/reverse speed ratios. Nothing else comes close.

Stop in and check them out today.



JOHN DEERE

Nothing runs like a Deere.

MURPHY
TRACTOR & EQUIPMENT CO.

1601 NO CORRINGTON AVE
KANSAS CITY, MO 64120
(816) 483-5000
Toll-Free: (888) 306-3434

3755 EAST KEARNEY
SPRINGFIELD, MO 65803
(417) 863-1000
Toll-Free: (888) 306-2656

www.murphytractor.com

2006 MLICA Drainage Workshop Offers New Opportunities for the Smart Contractor

It's official - the 2006 MLICA Drainage Workshop was a tremendous success! The class size had been limited to the first 50 registrants and we sold out every seat - before the early-bird cut-off! We even had a waiting list of contractors and landowners who were hoping someone might drop out.

Do you know how to figure the velocity of water in a pipe? The most economical and practical choice in pipe dimension? The water properties in the soil you're working? The difference between fixed costs and variable costs? How to calculate the impact if increased or decreased prices for bidding jobs? How to find existing drain pipe in a field? How to build your customer base? How to determine the profile of a site from a topo map?

If you attended this workshop, the answers to all those questions would be a resounding, "YES!" If not, you might want to make sure you plan on attending the next MLICA Drainage Workshop. One of our attendees told us that even if he never laid a foot of drain pipe, the techniques and formulas he learned at this workshop would serve him well in lots of aspects of his business.

This workshop was the first of its kind in Missouri and those in attendance - landowners, contractors, and professional staff - are the true pioneers. Although drainage tile has been installed in Missouri for decades, the results of research at the Greenley Research Center in Novelty, MO has proven that modifications to the age-old designs and mind-sets can increase the yield on corn by as much as four fold - even during the 2005 drought.

Whether it was listening to an instructor, looking for information in their reference manuals, or quizzing a panel member, workshop attendees were exposed to the latest in drainage issues with both practical and theoretical applications.

Our deep thanks go to the experts who provided us with great insight into the pros and cons of subsurface drainage, controlled drainage, and subirrigation:

Kelly Nelson, Ph. D.; Research Agronomist; Greenley Research Center; Novelty, Missouri

Dick Purcell, P.E.; NRCS State Conservation Engineer; Columbia, Missouri

Bruce Atherton, P.E.; NRCS Planning Engineer; Columbia, Missouri

Clayton E. Lee; NRCS Soil Scientist; Columbia Missouri

Gary Sands, P.E., Ph.D.; Extension Engineer; Department of Biosystems & Agricultural Engineering; University of Minnesota; St. Paul, Minnesota

Stephen W. Baker, CPA; Springfield Plastics; Auburn, Illinois

Charlie Schafer; President; Agri Drain Corporation; Adair, Iowa

Buddy Hostetter; Owner; Hostetter Construction Co.; Waverly, Missouri

Eddie Hoff; Farmer; Booneville, Missouri

Tade Sullivan; Executive Director; Agricultural Drainage Management Coalition; Urbandale, Iowa

We would be remiss if we didn't thank the sponsors of this workshop. They, too, are progressive and recognized the benefit of getting landowners and contractors trained. Please be sure to thank the following sponsors for their financial help in this extremely successful, first adventure into subsurface drainage training:

- University of Missouri - Extension
- USDA's Natural Resources Conservation Service
- Agri Drain Corp.
- Hickenbottom, Inc.
- Missouri Corn Growers Association
- Missouri Soybean Merchandising Council
- Advanced Drainage Systems, Inc.
- Prinsco, Inc.
- Scheib Drainage Products
- Springfield Plastics, Inc.

More and more landowners in Missouri are becoming aware of the tremendous benefits of subsurface drainage and the wide variety of soils in which it has been effective. One of the largest gaps in getting these practices on the land is trained contractors. 40% of the 2006 MLICA Drainage Workshop attendees were contractors; almost 40% were landowners; and the remaining attendees represented government agencies, university employees, and pipe dealers.

Watch your mail for future training opportunities. You don't want to miss out on this!



**America's Most Complete Supplier
of Water Management Products**

**Call for a FREE
Video or CD!**

**Agri Drain
CORPORATION**

Call Today 1-800-232-4742

Visit our website www.agridrain.com
Adair, IA 50002 - Ph: 800-232-4742 - Fax: 800-282-3353
Call for a FREE catalog, "How to Build a Wetland" Video,
or Water Management CD

Back to School at the MLICA Drainage Workshop

Many attendees at the 2006 MLICA Drainage Workshop had to dust off their math skills which had been on the shelf since they graduated high school! Although they may have been a little rusty at first, by the time the Workshop was over, everyone agreed ... this was great!



↑ *Even the instructors learned a thing or two! From left: Kelly Nelson, Research Agronomist, Greenley Research Center; Eddie Hoff, Booneville farmer; and Steve Baker, CPA, Springfield Plastics, Inc. discuss some of the finer points.*



↑ *Phil Algreen, Agri Drain Corp. (left) and Mark Caufield, Levings Construction (right), supervise Roger Levings' calculations on a sample site's profile.*



↑ *Contractors, landowners, and industry reps teamed up to solve the team design problem which incorporated all the workshop's techniques.*



↑ *Dick Purcell, NRCS State Engineer, (left), answers a design question from Brad Kleinsorge, Martinsburg, MO (far right), as Doug Schnitker, Mound City, (second from left) listens in.*



← *Don Scheib, Scheib Drainage Products (far left) checks the facts in the MLICA Drainage Workshop Reference Manual, while Harold Hall (center) and Corey Hall (right), both of Williamstown, MO ponder the possibilities.*

Watch your mail for the next
MLICA Drainage Workshop!